



How Rental Housing Providers Can Access Historic Federal Broadband Infrastructure Funding

September 6, 2023



Webinar Information

- To ensure good sound quality, all attendees will be muted during the webinar.
- This webinar will be recorded.
- Please submit all questions to the chat box throughout the broadcast.
- For more information on NMHC please visit nmhc.org.

NMHC Disclaimer

This webinar is provided for informational purposes only. This content is not investment or legal advice. NMHC assumes no liability for the use of the information provided in this webinar. The views expressed during this webinar are those of the individual presenters and not NMHC as a whole. Please consult with your own counsel for legal advice.

NMHC Anti-Trust Policy

NMHC's antitrust policy is designed to avoid even the appearance of impropriety. Antitrust laws prohibit activities that could result in an unreasonable restraint of trade. Therefore, please avoid discussing prices and pricing strategies, and other topics that could impact prices, including discounts and promotions, wages, costs, market allocation, output reductions, or topics that discourage dealing with a specific provider or customer during any NMHC-hosted event, whether formal or informal, held in person or virtually.



Welcome!

Thank you for joining us for today's webinar.



Kevin Donnelly
VP of Government Affairs,
Technology & Strategic Initiatives
NMHC



Joe Riter
Sr. Manager, Public Policy
NAA

Segment 1: Webinar Speakers



Adeyinka Ogunlegan

*Vice President, Government Affairs
& Policy,
EducationSuperHighway*



Sean Gerner

*Senior Director, Apartment Wi-Fi
Program,
EducationSuperHighway*



SEPTEMBER 6, 2023

HOW RENTAL HOUSING PROVIDERS CAN ACCESS HISTORIC FEDERAL BROADBAND INFRASTRUCTURE FUNDING

EducationSuperHighway



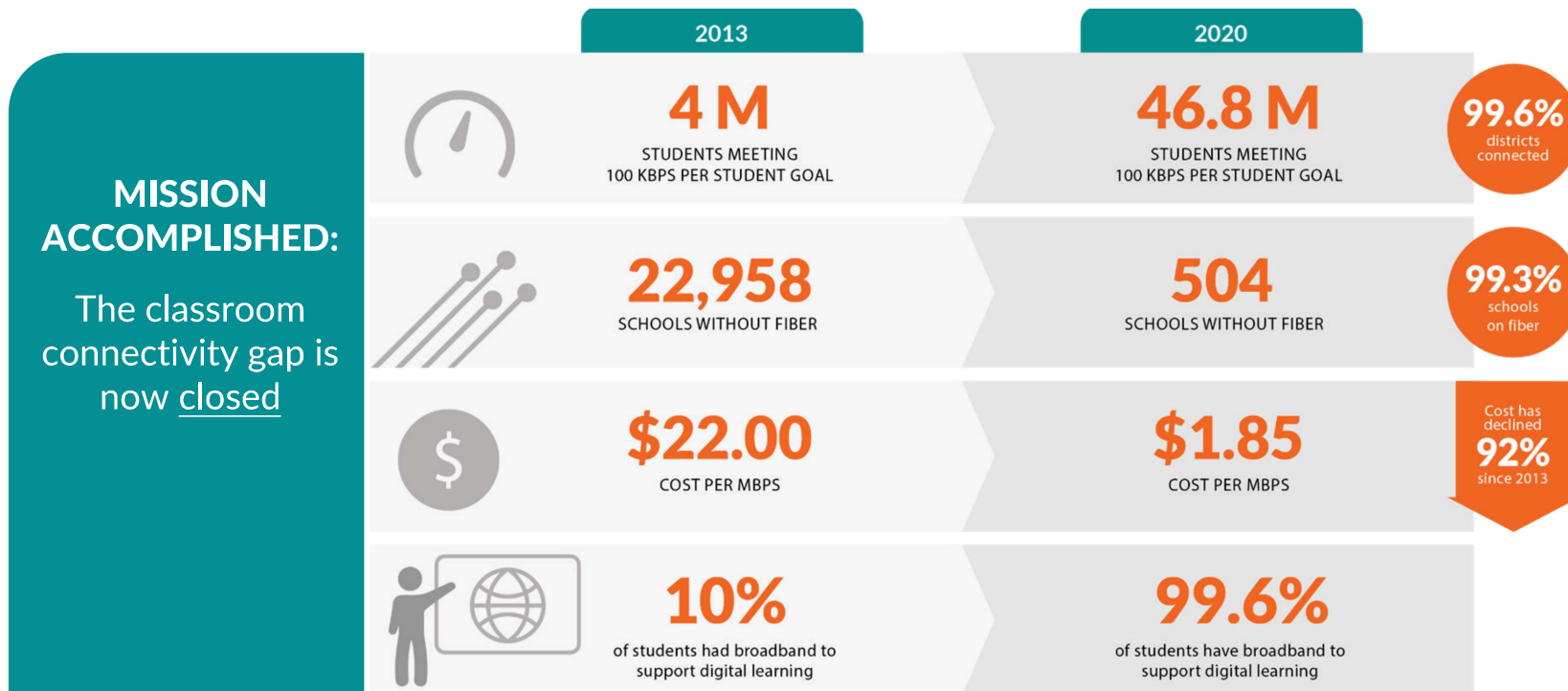
Content

- 01** Introduction to EducationSuperHighway
- 02** Overview of the Broadband Equity, Access, and Deployment (BEAD) Program
- 03** BEAD & Multi-Family Housing: Apartment WiFi as a Solution
- 04** Your Role: Make Sure Your Properties Count
- 05** Q&A



OUR HISTORY

From 2013 to 2020, EducationSuperHighway Led the Effort to Close the K-12 Digital Divide



OUR MISSION

Close the digital divide for the **17 million households** that have access to the Internet but can't afford to connect.

We focus on America's most unconnected communities, where more than 25% of people don't have Internet.



BROADBAND EQUITY, ACCESS, AND DEPLOYMENT PROGRAM

BEAD Basics

- **THE BROADBAND EQUITY, ACCESS, AND DEPLOYMENT (BEAD) PROGRAM**, provides \$42.45 billion to **expand high-speed internet access by funding planning, infrastructure deployment and adoption programs**
- **ELIGIBLE ENTITIES WILL RECEIVE A MINIMUM OF \$100M**;
Additional funding will be determined by each entities % of unserved and underserved households. TBD by the New FCC Data Maps (to be released Fall 2022)
- **PROGRAM PRIORITIES**
 - Unserved locations (No access to 25/3 Mbps)
 - Underserved locations (No access to 100/20 Mbps)
 - Community anchor institutions (Without gigabit connections)
 - Multi-Family Households can be prioritized in BEAD funding



All 50 states, D.C., Puerto Rico, and all other U.S. territories submitted their Letters of Intent (LOIs) to request BEAD Funds.



The IJA sets forth a \$65 billion investment into broadband through the Broadband, Equity, Access, and Deployment; Digital Equity Act, and Affordable Connectivity Programs



BROADBAND EQUITY, ACCESS, AND DEPLOYMENT PROGRAM

BEAD-Eligible Uses

PLANNING FOR THE DEPLOYMENT of high-speed internet, including conducting research, collecting data, outreach, and training.

DEPLOYING OR UPGRADING INTERNET in unserved or underserved areas or improving service to community anchor organizations.

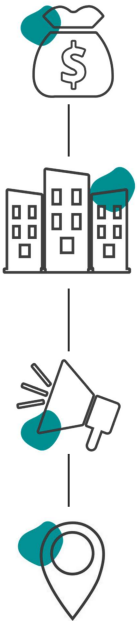
INSTALLING INTERNET AND WI-FI INFRASTRUCTURE in eligible multi-family dwelling units (MDUs):

1. Have a substantial share of unserved households; or,
2. Are in locations where the number of households with an income at or below 150% of the poverty line is higher than the national percentage.



BROADBAND EQUITY, ACCESS, AND DEPLOYMENT PROGRAM

Connecting multi-family and public housing with BEAD



FEDERAL FUNDING

\$42.45 billion available through the Broadband Equity, Access, & Deployment (BEAD) Program.

MULTI-FAMILY HOUSING

Projects for multi-family residential buildings are specifically highlighted in the bill.

STATE ACTION

States will be given allocations from the BEAD program to fund local projects via grant programs.

LOCAL PROJECTS

Local stakeholders will be able to apply for grant funding by proposing “shovel ready” projects, such as Apartment Wi-Fi



ALLOCATION OF BEAD FUNDS

FCC Broadband Data Maps do not accurately reflect the connectivity of MDUs

1

20-25% of unconnected households across the country live in multi-family housing.

2

The FCC Broadband Data Map identifies multi-family housing developments as one Broadband Serviceable Location (BSL) but do not represent broadband availability of the individual units.

3

Without accurate unit-by-unit data, the maps will significantly **undercount the number** of unserved and underserved MDUs and households living in multi-family housing.

4

The FCC challenge process places the burden of proof on unconnected residents, most of whom have limited to no access to the Internet or are unaware of this program and the challenge process.

5

By states adopting the NTIA's challenge process guidance, states can fairly putting the onus back on ISPs to provide unit-level service availability for all MDUs.



WHY APARTMENT WI-FI?

An **Apartment Wi-Fi Program Plan** Is Key to Closing the Broadband Affordability Gap



50+ unit MDUs Required by the National Broadband Map

9,417



50+ unit MDUs Requiring Challenge Process Review

75K



Free Wi-Fi networks in these buildings can connect

1.3M

of the country's most vulnerable households.



Free Wi-Fi networks in these buildings can connect

10.2M

of the country's most vulnerable households.



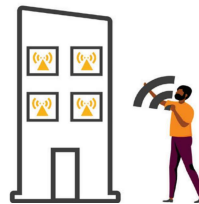
APARTMENT WI-FI

Better Connectivity at a Lower Cost



STEP 1

Procure a high speed fiber internet connection to the building



STEP 2

Install Wi-Fi access points efficiently to provide ubiquitous coverage



STEP 3

Provide residents with the SSID and password to connect to the internet

Learn more about Apartment Wi-Fi at

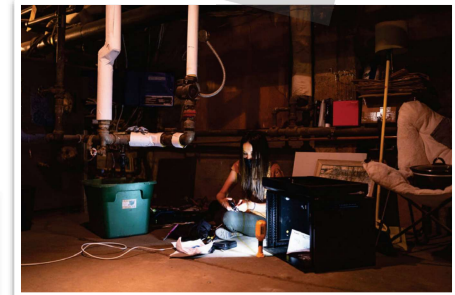
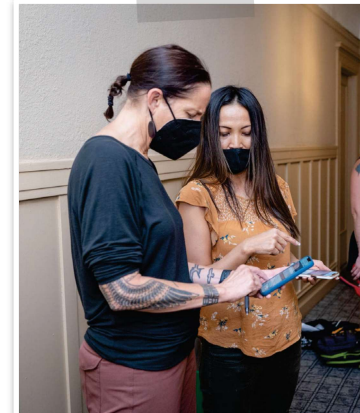
[educationsuperhighway.org](https://www.educationsuperhighway.org)



APARTMENT WI-FI

Case Study: **Oakland, California**

- **We raised awareness** with property owners via mass marketing, webinars, and one-to-one outreach.
- **Interested property owners signed an MOU** giving us permission to solicit bids on their behalf.
- **We designed RFPs** for participating buildings and promoted the RFPs to managed service providers (MSPs).
- **We reviewed RFP responses and advised property owners** on final awards. Property owners signed contracts with MSPs.
- **We validated the network installations** to ensure they met our high standards.
- **We supported network adoption** for residents.



BEAD & DEA

BEAD Key Dates



July 2022 - States submit letters of intent (July 18th)

Aug 2022- States request initial planning funds

June 2023 - BEAD Funding Allocations Announced

Fall 2023 - State 5-Year Plan Due to NTIA

December 2023 - Initial Proposal's Due to NTIA

2024- Initial Proposal Review & State Challenge Process

December 2024 - Final Proposal Due and Release of Remaining Funds



YOUR ROLE: MAKE SURE YOUR PROPERTIES COUNT!

1. KNOW YOUR BUILDING STATUS

- Review National Broadband Map Designation
- Assess Building Connectivity

1. ENGAGE WITH STATE BROADBAND OFFICE(S)

- 1:1 Meetings
- Stakeholder outreach events
- Advocacy Letters

1. PARTICIPATE IN STATE CHALLENGE PROCESS

What: States are required to develop a transparent, evidence-based, fair, and expeditious challenge process

Who: Local government, nonprofit organization, or broadband service provider can participate

Why: Participants can challenge the state's determination of whether a particular location or community anchor institution is **eligible for grant funds**.



Next Steps

- 1 Review your property status on the National Broadband Map
- 2 Engage State Broadband Offices and urge them to prioritize MDUs
- 3 Connect with EducationSuperHighway to learn more about Apartment Wi-Fi



nohomeleftoffline.org/apartment-wifi



ADEYINKA OGUNLEGAN
Vice President, Government Affairs & Policy
adeyinka@educationsuperhighway.org



SEAN GERNER
Senior Program Director
sean@educationsuperhighway.org

Segment 2: Webinar Speakers



Jamile Kadre
Federal Communications
Commission (FCC)



Julia Johnson
Federal Communications
Commission (FCC)

Affordable Connectivity Program Resources

- To apply, please visit [GetInternet.gov](https://www.getinternet.gov) or [Accedeainternet.gov](https://www.accedeainternet.gov). Updated online application instructions are available in English, Spanish, and 8 other languages.
- For more information, please visit [AffordableConnectivity.gov](https://www.affordableconnectivity.gov) (resources available in English and Spanish) or contact ACPinfo@fcc.gov.
- For consumer questions, please visit the FCC's ACP Consumer Hub at [fcc.gov/ACP](https://www.fcc.gov/ACP).
- Enrollment tracker may be found at [fcc.gov/data](https://www.fcc.gov/data).
- Consumer FAQs are available at www.fcc.gov/affordable-connectivity-program-consumer-faq.
- Consumer toolkits are available at <https://www.fcc.gov/acp-consumer-outreach-toolkit> and www.affordableconnectivity.gov/community-resources/.
- For assistance, call the ACP Support Center at (877) 384-2575 seven days a week from 9 a.m. – 9 p.m. ET or send an email to ACPSupport@usac.org. For accessibility questions, please email FCC504@fcc.gov.
- Sign up for ACP email updates and upcoming events. Find upcoming trainings and other resources on the ACP Learn page.

Questions?



Type your question into the chat box on your control panel.

or

Raise your hand and NMHC staff will call on you and unmute you.

NMHC

Apartment Wire Newsletter

We Have a Newsletter!

Stay in the loop on industry news, legislative changes and NMHC activities with our monthly Apartment Wire newsletter.

Scan to subscribe!



[NMHC.org/aw](https://nmhc.org/aw)

Thank You!



Please complete the survey as you exit the virtual room—your feedback is essential to our future content planning.